

> Art Agenda

The Art Agenda and cultural pages are produced by The Gate Foundation in Amsterdam, the Netherlands. Please send all information about activities and events relating to Asian art and cultures to:

The Gate Foundation
Lijnbaansgracht 322-323, 1017 XA
Amsterdam, the Netherlands
T +31-20-620 8057
F +31-20-639 0762
info@gatefoundation.nl
www.gatefoundation.nl

Australia
Queensland Art Gallery
Melbourne Street, South Brisbane
Queensland, 4101
gallery@qag.qld.gov.au
www.qag.qld.gov.au

Until 23 January 2003
Asia-Pacific Triennial of Contemporary Art
The fourth Asia-Pacific Triennial, or APT 2002 must be seen as one of the important shows in the world, featuring modern and contemporary art from the Asia-Pacific region. Featuring work by a wide range of established and emerging artists from the region, including Nam-June Paik (Korea/Japan), Yayoi Kusama (Japan/USA), Lee U-fan (Korea/Japan), Heri Dono (Indonesia), Nalini Malani (India), Song Dong (China), Suh Do-Ho (Korea/USA), Michael Ming Hong Lin (Japan/Taiwan), Jose Legapasi (Philippines), and Lisa Reihana (New Zealand). Throughout the first three months between September and November, the APT will feature several workshops at the Queensland Art Gallery, as well as panel discussions with artists, and lectures on Asian Art.

Canada
Vancouver Art Gallery
750 Hornby Street
Vancouver, BC
T +1-604-662 4700
F +1-604-682 1086
www.vanartgallery.bc.ca

5 October 2002 – 12 January 2003
Won Ju Lim
Solo exhibition of the Korean-born artist Won Ju Lim, currently living and working in Los Angeles. Since the mid-1990's Won Ju Lim has been creating mixed media works, often featuring sculptures, which are based upon three-dimensional modular architectural plans and made

out of plexiglass, and foam core board, placed together in a maze of urban structures.

China
Shanghai BizArt Center
758 Julu Road
Building 5, 3rd Floor
T +86-21-6247 0484
www.biz-art.com

BizArt, based in Shanghai, focuses on organizing and promoting art events in China and abroad, including exhibitions, workshops, and artist in residency programmes. This organization also publishes a wide range of articles on modern and contemporary art.

October – November 2002
N+N Corsino
Having recently featured works by young British artists from the Decima gallery in London, BizArt will continue its support of artistic exchange in this show which features a video installation by N&N. These two choreographers and video makers from France created it from impressions of their numerous travels to Shanghai.

Courtyard Gallery
95 Donghuamen Dajie
Dongcheng
Beijing, 100001
info@CourtYard-Gallery.com
www.courtyard-gallery.com

27 October 2002 – December 2002
Guo Jin and Guo Wei New Works Exhibition
The second duo exhibition at the Courtyard Gallery of the Sichuan-based brothers Guo Jin (b. 1964) and Guo Wei (b. 1960). Both artists graduated from the Sichuan Academy of Fine Arts in Chongqing.



Anusapati preparing his work entitled 'Tied' for his solo exhibition 'Conversation' in Cemeti Art House, October 2002

December 2002 – January 2003
Group Exhibition - New Paintings
Group exhibition featuring new works by Aniwar (b. 1962), Fang He (b. 1971), and He Yunchang (b. 1967).

March 2003
Wang Shugang Solo Exhibition
First solo exhibition of the Chinese-born German sculptor Wang Shugang (b. 1960), who graduated in 1980 from the Sculpture Department of the Central Academy of Fine Arts, and is currently living and working in Beijing as an independent artist.

Guangdong Museum of Art
Er-Sha Island
Guangzhou
gztriennial@hotmail.com
www.gd-art.com

18 November 2002 – 19 January 2003
The First Guangzhou Triennial
Reinterpretation - A Decade of Experimental Chinese Art (1990-2000)
The Guangdong Museum of Art will host the First Guangzhou Triennial, entitled *Reinterpretation - A Decade of Experimental Chinese Art (1990-2000)*. The Triennial aims to offer the visitor a comprehensive survey of Chinese experimental art in the last decade of the twentieth century. The chief curator of the Triennial is Wu Hung, who has been working over the past two years in setting up this important event, with the help of a curatorial committee, consisting of Wang Huangsheng, Huang Zhuan, Feng Boyi, and Zang Zhen.

Shanghai Art Museum
325 West Nanjing Road
Shanghai

22 November 2002 – 26 January 2003
2002 Shanghai Biennale
The Construction of the Metropolis
Hosted by the Shanghai Art Museum, the Shanghai Biennale has become an important event amidst the many biennial exhibitions that have recently sprung up in different regions across Asia. The last Biennale attracted a huge audience and featured the work of a wide range of artists from China and abroad. This Biennale is organized by two chief curators, Alena Hess and Hans Ulrich Obrish, working together with a curatorial team from China, including Fan Di'an, Wu Jiang, and Li Xu and will feature the work of sixty artists.

France
Fondation Cartier pour L'art contemporain
261 Bld Raspail
Paris
T +33-1-4218 5651
F +33-1-4218 5652
www.fondation.cartier.fr

Until 27 November 2002
Takashi Murakami, Kaikai Kiki
Following a large exhibition on Japanese pop culture in October which was organised by the Japanese artist Takashi Murakami, the Fondation Cartier pour L'art contemporain features the first solo exhibition of works by Takashi Murakami ever staged at a European institute. For the exhibition Murakami has chosen to present a wide range of works, including several new works that have been made for the show in Paris.

Germany
Ludwig Galerie Schloss Oberhausen
Konrad-Adenauer-Allee 46
Oberhausen, 46042
T +49-208-825 3811
F +49-208-825 3813
www.oberhausen.de/LudwigGal/ausst.htm

12 October 2002 – 2 February 2003
China - Tradition and Modern
Featuring a large collection of artefacts and artworks from the collection of Peter and Irene Ludwig Foundation and from the permanent collection of the Chinese National Museum in Beijing, China, the exhibition presents an overview of the history of Chinese art, including metal works, ceramics, porcelain, painting, graphic works, and photographs. In addition to pre-modern and modern works, the exhibition also features works by contemporary Chinese artists, borrowed from the private collection of the Swiss art collector Dr Uli-Sigg, and including works by Xu Bing, Qiu Shihua, Song Dong and Yin Xiuzhen, among others.

Museum für Ostasiatische Kunst (Museum of East Asian Art)
Lansstraße 8
Berlin, Dahlem, D-14195
dgok@dgok.de
www.dgok.de
www.smpk.de

Until 2 February 2003
Landscapes in Modern Chinese Painting
Opening in September the exhibition features a large collection of modern Chinese landscape paintings.

Prüss & Ochs Gallery Berlin
Sophienstraße 18
Berlin-Mitte, D-10178
info@pruess-ochs-gallery.de
www.pruess-ochs-gallery.de

20 November 2002 – January 2003
Contemporary Shanghai
Overview exhibition focussing on contemporary visual culture in Shanghai and featuring works by several contemporary artists, living and working in Shanghai.

India
Institute of Informatics & Communication
South Campus, Delhi University
New Delhi, 110021
euindia.iic.ac.in/index.php

13 – 14 December 2002
Art, Nationalism, and Eastern Civilisation
The University of Delhi, Institute of Informatics and Communication, will conduct a two-day conference on art in Asia. The conference was first initiated by the European Union and is co-sponsored by the Japan Foundation. It marks the 100th anniversary of Okakura Tenshin's visit to India and the fiftieth anniversary of diplomatic relations between India and Japan. The stated objective of the seminar is to use this occasion to re-examine the ideas of Okakura and his contemporaries, focusing specifically on art, modernity, the nation-state, 'eastern civilization' and Pan-Asianism, and to use this opportunity to reconsider broader issues in the formation of an Asian identity as well as in the relations between the countries of Asia, in particular focusing on India, Japan, and China.

Indonesia
Cemeti Art House
Jalan DI. Panjaitan 41
Yogyakarta, 55143
cemeti@indosat.net.id
www.cemetiarthouse.com

3 – 31 October 2002
Anusapati
Solo exhibition by the Indonesian installation artist Anusapati. Born 1957 in Solo Anusapati finished his Master's Degree at the Pratt Institute in Brooklyn, New York. He is currently one of the senior teachers at the Post Graduate Department of the Arts Institute of Indonesia in Yogyakarta. The exhibition at the



Nanyang 1950-65: Passage to Singaporean Art. Cheong Soo Pieng, 'Iban Girls', 1953.

Cemeti Art House features several site-specific and previously made installations, featuring an artistic dialogue with the materials that surround the artist's daily life.

Japan
Fukuoka Asian Art Museum
Hakata Riverain 7-8F
3-1 Shimokawabata-machi
Hakata-ku
Fukuoka City, 81 0027

Until 24 December 2002
Chinese Stories
Exhibition featuring the work of artists who share a common Chinese identity background and live in different parts of China, Japan, Southeast Asia, Australia, Europe, and the United States. The artists featured in the exhibition include Amanda Heng, Xu Bing, Tan Chin Kuan, Tang Da Wu, Cai Guoqiang, Wong Hoy-cheong, Eng Hwee Chu, and Lim Poh Teck.

7 November 2002 – 14 January 2003
Nanyang 1950 – 1965: Passage to Singaporean Art
Exhibition featuring modern art from Singapore produced during the time that Singapore was struggling for their independence from the United Kingdom and from Malaysia. The exhibition features a series of woodblock prints alongside of other media.

21 November 2002 – 2 February 2003
Korean Visual Culture Today
Exhibition featuring a wide range of works by artists from Korea and other examples of present-day visual culture in Korea. The work shows the impact of rapid economic development and major social changes, while at the same time, revealing a strong cultural identity based upon Confucian norms and values.

30 November – 24 December 2002
Winds of Artist in Residence
Exhibition featuring works by artists who have been invited by the Fukuoka Asian Art Museum for the museum's residency programme, including artists featured at the 2nd Fukuoka Asian Art Triennale earlier this year. (Also see: the review by Caroline Turner)

Tokyo Opera City Art Gallery
3-20-2 Nishi-Shinjuku, Shinjuku-ku,
Tokyo, 163-1403
T +81-3-5353 0756
F +81-3-5353 0776
www.operacity.jp

7 December 2002 – 2 March 2003
Under Construction
Between late 2001 and late 2002, the Japan Foundation has sponsored the 'Under Construction Project', a series of collaborative curatorial projects which involves a group of eight young curators from seven different countries in Asia working together to set up seven local exhibitions in Japan, Korea, Indonesia, the Philippines, India, Thailand, and China. On 7 December 2002, the project will culminate in a final exhibition held at the Tokyo Opera City Art Gallery that aims to reconstruct the previous local exhibitions and highlight the various viewpoints on contemporary art in Asia. (Also see: the feature on the Japan Foundation in the 'Asian Art Online' section)

Korea
Busan Metropolitan Art Museum
1413 Woo-dong, Haeundae-gu
Busan, 612-020
T +81-51-7404212
F +81-51-7404280-1

Until 17 November 2002
Busan Biennale 2002
Culture meets Culture
From 15 September 2002, and coinciding with the Asian Games until mid-November, the Busan Biennale was held at the Busan Metropolitan Art Museum and other venues in and around the city of Busan, Korea. Under the artistic directors, Kim Airryung, Kim Kwang-woo and Song Kuen-bae, a team of three international commissioners, Kim Levin (USA), Catherine Franclin (France), and Akira Tatehada (Japan) have set up three large events. The Contemporary Art Exhibition, featuring works by a large group of international artists from

Asia, Africa, Europe, North America, and South America, was held at the Busan Metropolitan Museum. From 30 September to 27 October the Sea Art Festival featured site-specific installation works and performances by several international artists, including Joep van Lieshout from the Netherlands. Finally the Busan Sculpture Project will feature public sculptures by national and international artists at the Busan Stadium and at the Olympic Park. Works by a wide range of artists from Asia will be featured in the events, including Navin Rawanchaikul (Thailand), Subodh Gupta (India), and the late Chen Zhen (China/France), among others.

National Museum of Contemporary Art, Korea

San 58-1, Makgye-dong
Gwacheon-si
Seoul, Gwacheo-do, 427-701
T +82-2-2188 6000
F +82-2-2188 6123
www.moca.go.kr

14 November 2002 – 19 January 2003

Origin of Shape

The last in a series of exhibitions organized by the National Museum of Contemporary Art that examines the historical discourse of contemporary Korean art, this exhibition focuses on the Monochrome movement in Korea.

Seoul Museum of Art

37 Seodaemun-dong
Jongno-gu, Seoul, 110-062
T +82-2-2124 8933
http://seoulmoa.org

Previously called the Seoul Metropolitan Museum of Art, the Seoul Museum of Art opened on 17 May 2002 at a new location on the former site of the old Supreme Court in Jeong Dong, centre of Seoul.

Until 24 November 2002

Seoul International Media Art Biennale Luna's Flow

Sponsored by the Seoul Metropolitan government, the Seoul International Media Art Biennale will be held at the Seoul Metropolitan Art Museum and on the streets along the Toksu Palace and City Hall Palace. Curated by Maire de Bugerolle, Michal Chen, Huang Du, Gregor Jansen, Kim Machan, Gunalan, and Azumaya Takashi, the biennale features 200 media artworks by 35 Korean

and 42 foreign artists, as well as 50 Web artists who are also participating in the exhibition.

5 – 24 December 2002

Seoul Art Exhibition

In addition to showing its large permanent collection, the Seoul Museum of Art will be hosting a variety of special, project-based, local and international exhibitions, including the Seoul Art Exhibition, which will feature works by local artists. Further details are to be announced. For more information, also visit: <http://english.metro.seoul.kr>

Philippines

Cultural Center of the Philippines (CCP)

CCP Complex, Roxas Boulevard
Passay City, Metro Manila
ccp@culturalcenter.gov.ph

Founded in 1969 the Cultural Center of the Philippines (CCP) encompasses two concert halls, a theatre, library, museum, and several art galleries. The art collection of the CCP arts collection features contemporary artworks from the 1960s to the 1980s, as well as a collection of indigenous and colonial cultures in the Philippines. The main gallery holds about four exhibitions each year, with the smaller galleries featuring an annual total of around forty exhibitions.

24 October – 25 November 2002

Curators Choice: Bulwagang Fernando Amoroso

Exhibition featuring site-specific works by the Philippino artist Eduardo Enriquez in collaboration with a group of artists, which explores the relationship between the artist practitioner and the curatorial practice.

Singapore

Sculpture Square

155 Middle Road
Singapore, 188977
arts@sculpturesq.com.sg
www.sculpturesq.com.sg

9 October – 1 December 2002

Blindspot: Infringe the Obvious

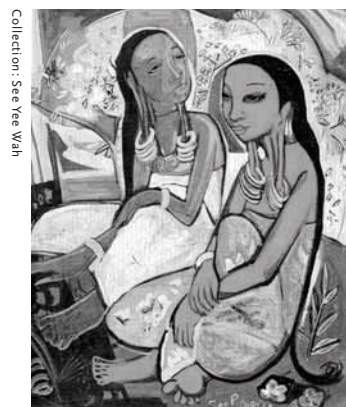
Exhibition organized to celebrate the third anniversary of the Sculpture Square gallery, featuring works by four young and emerging artists from Singapore. For the exhibition, the artists Jeremy Hiah, Claire Lim, Benjamin Puah, and Tan Wee Literacy have taken Sculpture Square as

the site for creating a series of site-specific installations, and focussing around the theme 'Blindspot' in social life and in the changing relationship between mankind and the physical environment.

28 February – 30 March 2003

Artists Residency Exhibition

Exhibition open to individual artists or collectives who usually live and work in Singapore and other parts of Asia. The residency programme enables artists to develop their skills and practice working directly with gallery space in creating their works. Proposals for projects may include work that pertains to cultural, social and conceptual issues that the artist can address in a site-specific work made during the course of the residency.



Nanyang 1950-1965: Passage to Singaporean Art. See Cheen Tee, 'Next Generation', 1955.

Singapore Art Museum

71 Bras Basah Road
Singapore, 189555
T +65-332 3222
F +65-334 7919
www.nhb.gov.sg/SAM/sam.shtml

Until 1 December 2002

A Picture Paints A Thousand Words

Featuring a special selection from the Singapore Art Museum Permanent Collection, the exhibition aims to create awareness about the context within which art is created. The permanent collection encompasses a wide range of modern and contemporary artworks by artists from Singapore and other regions in Asia. The exhibition A Picture Paints A Thousand Words focuses on the public by including a wide range of public education programmes that allows the visitor to interact with the works on display and come up with ways of interpreting the works within a wide range of contexts.

Taiwan

Taipei Fine Arts Museum

181 Chung Shan North Road, Section 3
Taipei, 104
tfam-1@ms2.hinet.net
www.tfam.gov.tw

29 November 2002 – 2 March 2003

2002 Taipei Biennial

Great Theatre of the World

The theme of the 2002 Taipei Biennial, 'Great Theatre of the World' is inspired by the title of a famous play by Pedro Calderon de la Barca (1600-1681) which features the fate of mankind through its role in a play within a play. Taken as a metaphor for this important international recurring exhibition of contemporary art, the notion of 'play' in the museum is related to its role as a 'stage' for the art exhibition as a living experience. The final list of participating artists will have been announced in October this year and the exhibition promises to bring a range of artists from different regions in the world, including Asia.

Thailand

Thavibu Gallery

Silom Galleria Building, 3rd Floor
Suite 308, 919/1 Silom Rd.
Bangkok 10500
T +66-2-266 5454
F +66-2-266 5455

16 November – 18 December 2002

Burmese Days

Exhibition featuring works by the Burmese artists Aung Kyaw Htet and Myint Swe. Born in 1965 in Myaungmya, Aung Kyaw Htet studied at the Fine Art School in Rangoon. His detailed paintings feature portraits of Buddhist monks. Myint Swe was born in 1956 in the Rakhine State in the western part of Burma. From 1975 to 1977 he studied at the State School of Fine Arts in Rangoon continuing his studies at the Rangoon University, where he graduated in 1981. His paintings depict daily life in the city in an expressionist style.

United Kingdom

Liverpool Biennial

PO Box 1200
Liverpool, L69 1XB
info@biennial.org.uk
www.Biennial.org.uk

Until 24 November 2002

Liverpool Biennale 2002

Liverpool is currently the only city in the UK to host a Biennial of international contemporary art. Commenced in 1999, this second Biennial was delayed one year to coincide with the opening of the FACT arts centre and the reopening of the Walker Art Gallery, two of the main venues for this year's event, together with the Tate Liverpool, the Foundation for Art and Creative Technology, and a wide range of smaller galleries in the centre of the city. Led by Lewis Biggs, the Director of the Liverpool Biennial, a team of curators from Tate Liverpool, FACT and Bluecoat art centre have put together an International 2002 platform which features the work of many international artists, including several from Asia, such as Chiho Aoshima, Tatsuro Bashi, and Michael Ming Hong Lin..

United States

Freer Gallery of Art and Arthur M. Sackler Gallery

Jefferson Drive at 12th Street, SW
1050 Independence Avenue, SW.
P.O. Box 37012, MRC 707
Washington, D.C. 20013-7012
web@asia.si.edu
www.asia.si.edu

Until 5 January 2003

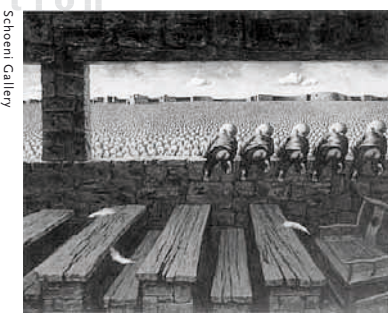
Sacred Sites: Silk Road Photographs by Kenro Izu

Coinciding with the 'Smithsonian Folklife Festival's celebration of the ancient Silk Road trading route', the exhibition Sacred Sites at the Arthur M. Sackler Gallery will feature twenty-five large format platinum prints by the renowned New York photographer Kenro Izu (b. 1949). The photographs can also be viewed at an online exhibition: www.asia.si.edu/exhibitions/kenro/default.htm

Until 19 January 2003

Masterful Illusions: Japanese Prints from the Anne van Biema Collection

Held at the Arthur M. Sackler Gallery the exhibition features a total of 138 prints from the Anne van Biema Collection, including colourful woodblock prints that had previously circulated in the urban Japanese marketplaces of the Edo period (1615 – 1868), and was later discovered by collectors from Europe and the United States.



Lin-Hai 'Radiant Sunshine Series No. 9 – Red Sun', 2002. Oil on Canvas, 140 x 180 cm.

Until 30 March 2003

Palaces and Pavilions: Grand Architecture in Chinese Painting

Exhibition featuring twenty-six paintings from the second to the nineteenth century, which evolve around three broad themes: historical palaces and the daily lives of women at the court, imaginary dwellings of deities and immortals, and private pavilions commissioned by public official and the wealthy Chinese elite.

10 November 2002 – 9 March 2003

The Sensuous and the Sacred:

Chola Bronzes from South India

Exhibition featuring numerous portable bronze sculptures produced between the ninth and thirteenth centuries in South India during the rule of the Chola dynasty. This exhibition, which includes the Freer's famous Sembian Mahadevi as goddess Parvati, brings together 60 bronzes that have been drawn from important public and private collections in the United States and Europe.

The Metropolitan Museum of Art

1000 Fifth Avenue at 82nd Street
New York, 10028-0198
T +1-212-535 7710
www.metmuseum.org

Until 9 February 2003

Cultivated Landscapes: Reflections of Nature in Chinese Painting -

With Selections from the Collection of Marie-Hélène and Guy Weill

A major exhibition that traces 1000 years of landscape painting in China, featuring over seventy works drawn from the Metropolitan Museum's permanent collection, including important paintings by Chinese master painters from the Five Dynasties period (907 – 960) to the Ming (1368 – 1644) and Qing (1644 – 1911) dynasties.

Seattle Art Museum

100 University Street
Seattle, WA 98101-2902
&

Seattle Asian Art Museum

Volunteer Park, 1400 East Prospect St.
Seattle, WA 98112-3303
T +1-204-654 3255
www.seattleartmuseum.org

Until 1 December 2002

Suh Do-Ho

Part of the celebration events surrounding the Anne Gerber Biennial series at the Seattle Art Museum, the 2002 Biennial features the first large survey exhibition of work by the young emerging artists Suh Do-Hoh. Born 1962 in Seoul, Korea, Suh now lives and works in New York. Over the past two years, he has become an internationally renowned artist whose work has been featured at the 2001 Venice Biennale, the Biennale of Sydney 2002, and the Asia Pacific Triennial 2002 in Brisbane.

21 December 2002 – 16 March 2003

Rabbit, Cat, and Horse: Endearing Creatures in Japanese Art

Exhibition featuring a range of traditional, modern, and contemporary Japanese artworks that explore images of animals. Approximately seventy objects including paintings, textiles, ceramics, lacquerware, and metal-works will feature animals that have inspired Japanese folklore and popular culture from the fourth century to the present. For the exhibition, the Seattle-based Japanese artist Maki Tamura will create a large site-specific installation of 'Hello Kitty', a popular icon of Japanese pop culture.

10 April – 15 June 2003

An Enduring Vision: seventeenth- to twentieth-Century Japanese Painting from the Gitter-Yelen Collection

More than 100 paintings, folded screens and albums from the Edo period (1615 – 1868) and the Meiji period (1668 – 1912) will feature at this exhibition. The Gitter Yelen collection is considered to be one of the four major private collections in the United States of Japanese painting from the Edo and Meiji periods, and provides an exclusive and comprehensive view of paintings from major schools in Japan, including Zenga, Manga, Maruyama-Shijo, Ukiyo-e, and the Eccentrics.